

Goorambat Wagyu

Pedigree backed by performance

Currently offering award winning Australian Wagyu genetic solutions for:

* Carcass consistency — marbling & flavour * Product consistency

GOORAMBAT MR. MARBLE K483

Aust. Rego #: GRSFK0483

B3FU, CL16FU, CHS1%, F11C



SIRE: WKSFP1593— Shigeshigetani

Sumo Itoshigenami X0065

DAM: SMOFE0175

TF Terutani 40/1

Mr. Marble K483 offers an outstanding combination of genetics. A beautifully balanced pedigree with Shigeshigetani, Itoshigenami TF148 and Terutani 40/1 all featuring. "Shigeshigetani is one of the most well rounded and consistent carcass sires available" says Scott DeBruin, Mayura Station.

Semen now available @ \$40

* Accredited Export Semen

Sexed semen available

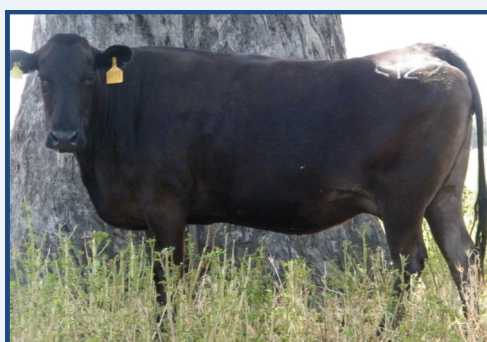
16/16 Analysis

Group	Tajima	Kedaka	Tottori	Itozakura	Shimane	Okayama	Hiroshima	Other	Total
D	10.47	1.06	-	2.5	0.5	0.16	0.81	0.50	16.01
	65%	14%	5%	21%	1%	9%	2%	2%	

GOORAMBAT DOUBLE SIXTY K473

Aust. Rego #: GRSFK0473

B3FU, CL16FU, CHS.F, F11F



GRSFE0122 – dam of Goorambat Double Sixty K473

Michifuku

SIRE: Michitsuru—WKSFU0006

Yasufuki 165-9

Ichyruno

DAM: GRSFE0122

Kitateruyasudoio003

A sire just ready to marble. Combining Michifuku, Yasufuku, Ichyruno and Kitateruyasudoio in the one pedigree. Added to that, proven dam carcass performance. E122 steer sired by PMGFD0139 MS8, CWT 455 kgs, age at slaughter 1218 days, Haruki 11 sired steer MS9+, CWT 423kgs, age at slaughter 728 days.

Semen now available @ \$40

* Accredited Export Semen

Sexed semen available

16/16 Analysis

Group	Tajima	Kedaka	Tottori	Itozakura	Shimane	Okayama	Hiroshima	Other	Total
D	12.41	0.94	0.69	0.38	0.03	0.08	0.11	0.66	16.01
	78%	14%	5%	21%	1%	9%	2%	2%	

Goorambat Wagyu 256 Peck Road, Goorambat. Australia 3725

T: 03 5764 1224

W: www.goorambatwagyu.com.au

Goorambat Wagyu

Pedigree backed by performance

Currently offering award winning Australian Wagyu genetic solutions for:

* Carcass consistency — marbling & flavour * Product consistency

GOORAMBAT TERUTANI F146 (AI)

Aust. Rego #: GRSFF0146

D.O.B 23/6/2010

B3F, CL16F, CHS.F, F11F



Terutani J2494 TF40

Itoshigenami TF148

SIRE: TF Terutani 40/1

DAM: Goorambat F C0021

TF Dai 2 Kinntou 3

Goorambat F Y101

F146 is one of the first 40/1 sons to have semen available in Australia. His sire, Terutani 40/1 is the bull everyone has wanted to use in a full-blood breeding program due to the progeny results under feedlot conditions and also because of the milk and size he is leaving in his daughters. By combining the all round ability of Terutani 40/1 from the Tajima line with the maternal grandsire Itoshigenami TF148 from the Shige Kanenami line, we are bringing into the pedigree the famous cow families of Okutani, Suzutani and Rikitani. The extra marbling ability added by having TF 148 should make this young sire a favourite of breeders of both full blood and commercial crossbred Wagyu.

16/16 Analysis

Tested FREE of all 5 recessive genes.

* Export qualified semen available \$25

Group	Tajima	Kedaka	Tottori	Itozakura	Shimane	Okayama	Hiroshima	Other	Total
C	10.05	0.14	0.00	3.88	0.69	0.32	0.73	0.19	16.00
	62.8%	0.9%	0.0%	24.3%	4.3%	2.0%	4.6%	1.2%	

Wagyu Group Breed Plan EBV's August 2015

GL	BW	200D	400D	600D	MCW	MILK	CW	EMA	RIB	RUMP	RBY
-0.5	-0.1	+7	+12	+14	+15	+4	+16	-1.7	+1.1	+1.7	-1.4
54%	62%	69%	66%	66%	59%	56%	61%	53%	54%	56%	51%

PEPPERMILL GROVE D139 (AI) (ET)

Aust. Rego #: PMGFD0139

D.O.B 5/8/2008

B3F, CHSF, CL16F, F11C



Dai 20 Hirashige J287—Kuro IKU

Itomoritaka J2703 Hongen

SIRE: Hirashigetayasu J2351 Hongen

DAM: Geanca F Z 5015

Dai 5 Yuruhime J187250—Kuro Koh

Gooree Morikita W41

Peppermill Grove D139 is the Wagyu sire to use to increase growth and milk characteristics. This pedigree combines the Kedaka bloodlines from his Sire ET J001 with Tottori bloodlines of his maternal grand sire ET J002, and then goes back to the Tajima bloodlines of ET J003.

He is ideal to use over high content Tajima bloodlines that have the marbling but need some frame, muscle and milking ability added.

* Export qualified semen available \$25

Wagyu Group Breed Plan EBV's August 2015

GL	BW	200D	400D	600D	MCW	MILK	SCR	CW	EMA	RIB	RUMP	RBY	IMF	MARB
+1.2	+3.7	+26	+37	+48	+44	+11	+2.3	+26	-0.9	-2.0	-1.4	+0.9	0.0	-0.08
59%	74%	75%	76%	78%	69%	61%	57%	72%	64%	62%	65%	59%	69%	63%

Goorambat Wagyu 256 Peck Road, Goorambat. Australia 3725

T: 03 5764 1224

W: www.goorambatwagyu.com.au